



THE RITZ - CARLTON
YACHT COLLECTION

INTRODUCING THE YACHT EXPERIENCE

AUGUST 2023



INTRODUCING EVRIMA

NOW SAILING!

- The highly anticipated debut of The Ritz-Carlton Yacht Collection has arrived; *Evrima* set sail for its maiden voyage from Barcelona on October 15th 2022.
- Named for the Greek word meaning Discovery, *Evrima* inspires travelers to immerse themselves in exceptional experiences, explore new destinations and foster the spirit of adventure.
- Guests are primarily new-to-cruise, around 40-50 years in age.
- Reservations are open for the Caribbean and Mediterranean seasons through 2024. The yachts are also available for private charter for 2024 and beyond.





**THE RITZ-CARLTON
YACHT COLLECTION**



**THE RITZ - CARLTON
YACHT COLLECTION**

EV RIMA BY THE NUMBERS



624
FEET
(190 METERS)

25,400
TONS

149
SUITES

298
GUESTS

246
CREW

1 to 1.21
CREW-TO-GUEST
RATIO

1 to 85.2
GUEST-TO-SPACE
RATIO

BRAND VALUE



THE RITZ-CARLTON

The Ritz-Carlton inspires life's most meaningful journeys.

- AWARD-WINNING LUXURY HOTEL BRAND
- STRONG BRAND RECOGNITION GLOBALLY
- HOSPITALITY AT A GOLD STANDARD
- LEGENDARY PERSONALIZED SERVICE

SERVICE



SERVICE AT A GOLD STANDARD

Legendary service is provided by the Ladies and Gentlemen of The Ritz-Carlton, with almost one crew member for every guest.

- WARM
- SINCERE
- PERSONALIZED
- ANTICIPATORY

THE EXPERIENCE

Designed to combine the luxury lifestyle of The Ritz-Carlton with the casual freedom of a yachting vacation, The Ritz-Carlton Yacht Collection offers itineraries at a relaxed pace and introduce guests to the local cultures of each destination through curated immersive experiences ashore.

ALL-INCLUSIVE VALUE

PERSONALIZED SERVICE OF
THE RITZ-CARLTON®

MULTIPLE DINING
EXPERIENCES, 24-HOUR IN-
SUITE DINING, PLUS
SPECIALTY DINING

ALL-SUITE
ACCOMMODATIONS, EACH
WITH PRIVATE TERRACE

UNIQUE MARINA-STYLE
PLATFORM, DIRECT ACCESS
TO WATER

VARIETY OF SOCIAL SPACES
FOR RECEPTIONS &
ENTERTAINMENT

RELAXED YACHTING PACE,
OVERNIGHTS & DAYTIME
PORTS OF CALL

CURATED, IMMERSIVE
DESTINATION EXPERIENCES
ASHORE

THE ALL-INCLUSIVE EXPERIENCE



- LUXURY ALL-SUITE ACCOMMODATIONS, EACH WITH PRIVATE TERRACE
- ACCESS TO A PERSONAL CONCIERGE
- MULTIPLE DINING EXPERIENCES, INCLUDING 24-HOUR IN-SUITE DINING
- MARINA PLATFORM WITH ACCESS TO NON-MOTORIZED WATER SPORTS WHILE AT ANCHOR
- BEVERAGES IN-SUITE AND THROUGHOUT THE YACHT
- ONBOARD ACTIVITIES AND ENTERTAINMENT
- ONBOARD GRATUITIES
- WI-FI THROUGHOUT THE YACHT

THE DINING EXPERIENCE

EVIRIMA DINING EXPERIENCES

INCLUDED

OPEN SEATING

MISTRAL

TALAAAT NAM

THE POOL HOUSE

THE EVRIMA ROOM

**Reservations encouraged once on board*



LIGHT BITES

THE BAR

THE LIVING ROOM

THE MARINA TERRACE

24-HOUR IN-SUITE DINING



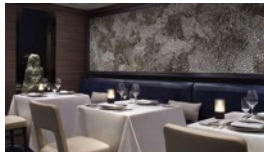
ADDITIONAL FEE

SPECIALTY*

S.E.A.

DINING PRIVÉE

**Reservations required*



MISTRAL
MEDITERRANEAN INSPIRED
DECK 8





THE POOL HOUSE
CASUAL VARIETY
DECK 5



THE EVRIMA ROOM
LOCALLY INSPIRED
DECK 4









S.I.A.

TELECOM K&M

THE LIVING ROOM
COFFEES AND PASTRIES
DECK 4



THE MARINA TERRACE
COCKTAILS AND LIGHT BITES
DECK 3



S.E.A.
SPECIALTY DINING
DECK 6



24-HOUR IN-SUITE DINING



EVIRIMA DINING EXPERIENCES

INCLUDED

OPEN SEATING

MISTRAL

TALAAAT NAM

THE POOL HOUSE

THE EVRIMA ROOM

**Reservations encouraged once on board*



LIGHT BITES

THE BAR

THE LIVING ROOM

THE MARINA TERRACE

24-HOUR IN-SUITE DINING



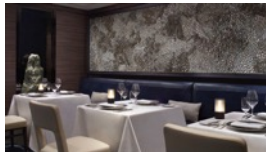
ADDITIONAL FEE

SPECIALTY*

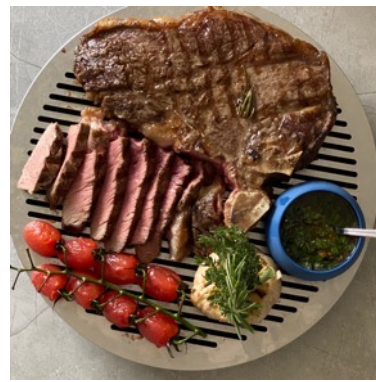
S.E.A.

DINING PRIVÉE

**Reservations required*



SAMPLE MENU ITEMS



THE SUITE EXPERIENCE

SUITE AMENITIES AND FEATURES

Wake up every morning relaxed and carefree in one of our 149 expertly appointed suites. Designed to combine the modern elegance of The Ritz-Carlton with the casual luxury of the world's most magnificent super yachts, our suites set a new standard for luxury travel.

PRIVATE OCEAN-VIEW
TERRACE

DOUBLE VANITY
BATHROOMS

ESPRESSO MACHINE
WITH COMPLIMENTARY
COFFEES AND TEAS

24-HOUR IN-SUITE
DINING

COMPLIMENTARY WI-FI

LUXURIOUS CUSTOM
KING BED SYSTEM AND
LINENS

MINI-BAR PROVISIONED
TO GUESTS'
PREFERENCES

COMPLIMENTARY
BOTTLE OF CHAMPAGNE
UPON ARRIVAL

INDIVIDUAL ROBE AND
SLIPPERS

ACCESS TO A PERSONAL
CONCIERGE IN ALL SUITE
CATEGORIES

EVIRIMA'S SUITES

- 149 SUITES, EACH WITH PRIVATE OCEAN-VIEW TERRACE
- HIGHEST PERCENTAGE OF LARGER SUITES IN LUXURY CRUISING
- TWO OWNER'S SUITES, EACH WITH PRIVATE WHIRLPOOL
- LOFTS AND COMBINABLE SUITES WITH FLEXIBLE CONFIGURATION
- SUPERIOR GUEST AMENITIES



SUITE AMENITIES

diptyque
paris

Luxury bath amenities, including shampoo, conditioner, body wash and body lotion from Diptyque



400 thread count sateen linens and throw blanket from the Hotel Collection by Frette



Complimentary chilled bottle of Moët et Chandon champagne upon arrival



Pop-up vanity mirror in suite



Hair dryer and flat iron from Harry Josh



Espresso machine with complimentary Illy coffee and Dammann teas

PERSONAL CONCIERGE



All suites include access to a Personal Concierge, standing by to ensure every detail of the voyage is considered, from dinner reservations at our specialty restaurant to organizing destination experiences. The Personal Concierge is the onboard touchpoint to ensure a seamless journey from start to finish.

The Personal Concierge will be the ultimate insider on board for guests, providing recommendations and insight, tailoring their voyage specifically to them.

SUITES AT A GLANCE

THE OWNER'S SUITE



SUITE: 1091 SQ FT | 101 SQ M
TERRACE: 635 SQ FT | 59 SQ M
QUANTITY: 2

THE VIEW SUITE



SUITE: UP TO 574 SQ FT | 53 SQ M
TERRACE: UP TO 129 SQ FT | 12 SQ M
QUANTITY: 4

THE TWO-STORY LOFT SUITE



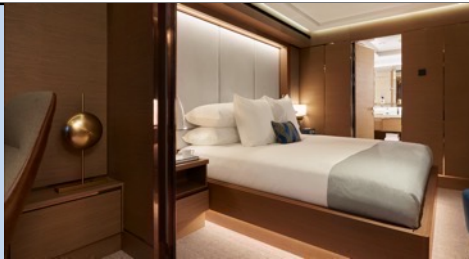
SUITE: 611 SQ FT | 57 SQ M
TERRACE: 81 SQ FT | 7.5 SQ M
QUANTITY: 12

THE GRAND SUITE



SUITE: 587 SQ FT | 55 SQ M
TERRACE: UP TO 118 SQ FT | 11 SQ M
QUANTITY: 14

THE SIGNATURE SUITE



SUITE: 429 SQ FT | 40 SQ M
TERRACE: UP TO 118 SQ FT | 11 SQ M
QUANTITY: 27

THE TERRACE SUITE



SUITE: 300 SQ FT | 28 SQ M
TERRACE: UP TO 81 SQ FT | 7.5 SQ M
QUANTITY: 90

THE OWNER'S SUITE

QUANTITY: 2
SUITE: 1091 SQ FT | 101 SQ M
TERRACE: 635 SQ FT | 59 SQ M



THE VIEW SUITE

QUANTITY: 4
SUITE: UP TO 574 SQ FT | 53 SQ M
TERRACE: UP TO 129 SQ FT | 12 SQ M



THE TWO-STORY LOFT SUITE

QUANTITY: 12
SUITE: 611 SQ FT | 57 SQ M
TERRACE: 81 SQ FT | 7.5 SQ M



THE GRAND SUITE

QUANTITY: 14
SUITE: 587 SQ FT | 55 SQ M
TERRACE 108-118 SQ FT | 10-11 SQ M



THE SIGNATURE SUITE

QUANTITY: 27
SUITE: 429 SQ FT | 40 SQ M
TERRACE: 81-118 SQ FT | 7.5-11 SQ M



THE TERRACE SUITE

QUANTITY: 90
SUITE: 300 SQ FT | 28 SQ M
TERRACE: 54-81 SQ FT | 5-7.5 SQ M



CONNECTING AND CONVERTIBLE SUITES

All suites are designed for two (2) guests, but many can be connected to satisfy the needs of families or to appeal to meeting planners. An innovative system offers the flexibility to transform connecting suites into larger spaces by removing a panel of the wall.

All connecting suites include:

- An expanded private terrace
- Two (2) luxury custom king bed sleep systems
- Two (2) in-suite safes
- Two (2) double vanity bathrooms, each with a modern shower system
- Three (3) digital flat screen televisions
 - Two (2) in Terrace-to-Terrace configurations

Terrace-to-Grand (connected)



Terrace-to-Signature (convertible)



Terrace-to-Terrace (convertible)



CONNECTING AND CONVERTIBLE SUITES

INNOVATIVE WALL SYSTEM

Flexible configuration options allow connecting suites to expand to satisfy the needs of families to appeal to meeting planners seeking to provide similar accommodations for their top performers.

The opening measures 7.2 feet wide by 7.2 feet high (2.2 meters wide by 2.2 meters high).

CONNECTING SUITES

Of the 149 suites on board, the connecting suites total 43 single-suite configurations. If all connecting suites are utilized as single-suite configurations, inventory reduces to 106 suites.

Select Terrace Suites (18 total) are convertible suites that can be configured as an extended living and dining area or remain a second bedroom when connected to the adjacent suite.

Three (3) combinations of suite categories are available for connecting suites:

Terrace-to-Terrace: 24 total (12 Convertible)

Terrace-to-Signature: 7 total (Three (3) Convertible)

Terrace-to-Grand: 12 total (Three (3) Convertible)

CONNECTING TERRACE SUITES

SUITE: 600 SQ FT | 56 SQ M
TERRACE: UP TO 162 SQ FT | 15 SQ M



THE MARINA

MULTI-FUNCTIONAL PLATFORM

DIRECT ACCESS TO THE WATER FROM DECK 3

COMPLIMENTARY WATERSPORTS DURING
PORT DAYS WHILE AT ANCHOR*

- PADDLEBOARDS
- WINDSURF BOARDS
- KAYAKS
- SAILBOATS
- SNORKELING ACCESSORIES

**Weather and local authorities permitting*







THE RITZ-CARLTON
YACHT COLLECTION



THE MARINA ACTIVITIES



90-minute private or semi-private lessons in sailing or windsurfing*

*available at an additional cost

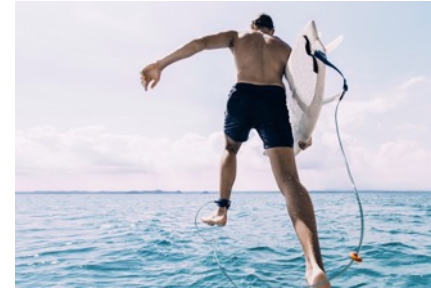


Aquatic fitness classes:

Land and Sea: Strength and stability using standup paddle boards, stability balls, bans and kettlebells

Paddleboard Fitness: Core conditioning and body weight exercises

Stretching at Sea



Orientations for water sports equipment:

Sailing 101

Kayaking 101

Snorkeling 101 (where available)

Paddleboarding 101



PUBLIC SPACES ON BOARD EVRIMA



- INTIMATE, RELAXED, CASUALLY ELEGANT ATMOSPHERE
- INTUITIVE, RESIDENTIAL FEEL
- LOUNGE AND BAR OFFER A VARIETY OF ENTERTAINMENT EXPERIENCES
- ACTIVELY SOCIALIZE OR ENJOY PRIVACY
- PEACEFUL RETREAT BY DAY, SOCIAL SCENE BY NIGHT













THE HUMIDOR

- Partnership with Davidoff to offer a wide assortment of world-class cigars including
 - Aniversario Series
 - Signature Series
 - Escurio Series
 - Winston Churchill Series
 - Oro Blanco Series
- Cocktails and spirits to pair with cigars, with Premium Reserve offerings available for an additional cost, including
 - Pappy Van Winkle
 - Rémy Martin Louis XII
 - Johnny Walker Blue Label
- History of Cigars educational event provides a sneak peak into the world of cigar making



SPA & WELLNESS

THE RITZ-CARLTON SPA® AND
FITNESS CENTER

SPA AND WELLNESS

- SPA DESIGNED AND OPERATED BY THE RITZ-CARLTON®
- INDOOR AND OUTDOOR TREATMENT ROOMS AND RELAXATION AREAS
- BEAUTY LOUNGE AND GENTLEMEN'S GROOMING SALON

- TECHNOGYM EQUIPMENT
- GROUP EXERCISE CLASSES
- PERSONAL TRAINING
- FITNESS ON DEMAND



THE RITZ-CARLTON SPA OFFERINGS

Guests can escape to their own personal oasis at The Ritz-Carlton Spa to indulge in the scents and delights from around the world while enjoying a relaxing massage or a nourishing facial featuring products from 111SKIN and ESPA.

- Massages
- Facials (for both ladies and gentlemen)
- Skin Treatments
- Salon Services
- Barber Services




THE RITZ-CARLTON
YACHT COLLECTION

An indulgence or a necessity,
a treatise of sensation or health,
an awakening or an escape, the Spa
experience signifies something
different for everyone. The Spa
experience aboard The Ritz-Carlton
Yacht Collection invites you to indulge
in scents and delights from around the
world. Inspired by the destinations we
visit and carried to life by our senses,
our treatments soothe the senses,
refresh the body and renew the spirit.
Alike only, this is make and drift away
in relaxation aboard your seas at sea.

SPA

SPA TREATMENTS



60- or 90-minute calming or deep-muscle massage, featuring a selection of aromatherapy oils, hot stones and enhancements designed by ESPA and 111SKIN.



Skin-nourishing treatments, including leg masques, exfoliating body scrubs and facials to hydrate and reinvigorate



Manicure and pedicure services performed with 111SKIN products paired with face masks to leave the skin and cuticles smooth and nourished



Salon services for men and women, including a clean shave or a hair cut and style

FITNESS STUDIO OFFERINGS

In addition to the spa, the onboard Fitness Studio is home to a health and wellness program integrating fitness and spa with lectures and nutrition that can be customized to fit guests' needs.

FITNESS STUDIO OFFERINGS:

- Personal Training
- Group Exercise Classes
- Private or Group Yoga Classes
- Fitness on Demand Access



















RITZ KIDS

- DEDICATED SPACE ON BOARD FOR CHILDREN AGES 4 TO 12
- ENHANCED SERVICES AVAILABLE DURING HOLIDAYS AND SUMMER MONTHS

MORNING SESSION: 9:00AM – 12:00PM \$45

AFTERNOON SESSION: 1:00PM – 4:00PM \$45

EVENING SESSION: 6:00PM – 9:00PM \$65



RITZ KIDS

- DEDICATED SPACE ON BOARD FOR CHILDREN AGES 4 TO 12
- ENHANCED SERVICES AVAILABLE DURING HOLIDAYS AND SUMMER MONTHS

MORNING SESSION: 9:00 AM – 12:00 PM \$45

AFTERNOON SESSION: 1:00 PM – 4:00 PM \$45

EVENING SESSION: 6:00 PM – 9:00P M \$65



RITZ KIDS PROGRAMMING



The Ritz Kids program is geared toward children from ages 4 to 12. Four key pillars are designed to inspire natural curiosity and creativity and to engage their senses.

OCEANS & MARINE LIFE: Examining our relationship with water and marine life while enlivening a natural curiosity into the underwater world of sea creatures

Sample activities: Water Cycle Craft, Create a Creature

DESTINATIONS AND THEIR CULTURES: Celebrating the cultures from around the world through art, music, theatre and play

Sample activities: Culture and Clay, Mystery Detective

OCEAN STEWARDSHIP AND SAILING: Shining a light on traditional and modern sailing practices including navigation, marine communication and ship stability

Sample activities: Destination Navigation Chart, Ropes and Knots

ENVIRONMENTAL RESPONSIBILITY: Promoting our role in the health of our planet for the future including sustainability, resource consumption and protecting our ecosystem

Sample activities: Water Sampling Science Experiment, Yacht Sustainability Systems

ENTERTAINMENT AND ENRICHMENT

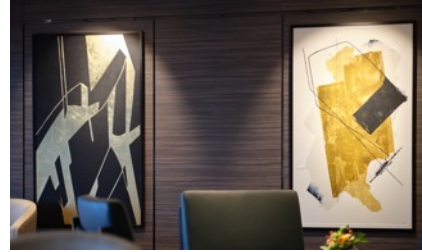


Led by the Entertainment & Enrichment Director, onboard entertainment staff features an in-house quartet comprised of one pianist, one vocalist, one guitarist and one drum/sax musician.



A global network of world-renowned entertainers and enrichment artists joins the yacht for specific sailings to suit the regions we visit.

Our detailed activities program features elements such as classic movies, themed dinners with curated entertainment and lectures.



A partnership with Enterprise & Art creates an immersive art program and curate a permanent collection of art showcased throughout the yacht.

Limited print editions and unique are available for purchase.



The onboard Arts Concierge will oversee the Art Program experience and provide regular educational talks on art history, curation and the stories behind each piece.

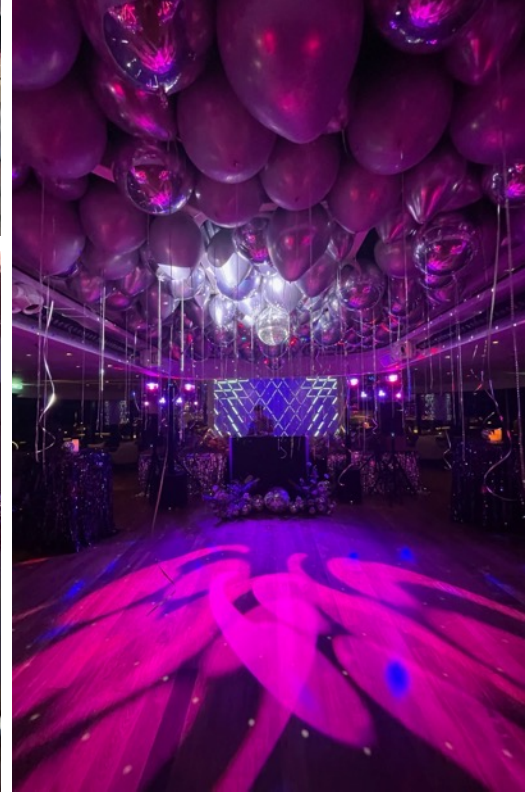
ONBOARD EVENTS

THEMED EVENINGS AND PARTIES

- En Blanc Party
- Havana Nights
- Disco Night

AFTERNOON TEA in The Living Room

RUM TASTING on The Observation Terrace



SPECIAL OCCASION PACKAGES

WEDDINGS AND VOW RENEWALS - \$900 PER COUPLE / \$450 PER GUEST

Our Wedding and Vow Renewal package allows guests to celebrate their special day with loved ones while onboard, with a ceremony officiated by the captain* and pre- and post- ceremony reception and toast.

This package includes lunch or dinner at our Michelin-inspired specialty restaurant or in our Dining Privéé, bouquets and boutonnieres for the bridal party, live music and a personalized cake.

CELEBRATIONS - \$950 PER COUPLE

Couples traveling with us who are celebrating a special occasion such as an anniversary or honeymoon may purchase our Celebrations package which includes a bottle of champagne, special turndown amenities, a couple's massage at the onboard spa, and their choice of Epicurean Experience from The Shore Collection.

Packages can be booked 134 days prior to sailing.

For more information, please email special.services@ritz-carltonyachtcollection.com

*The Ritz-Carlton Yacht Collection does not perform legally binding ceremonies on board.
It is recommended for couples to hold a civil ceremony to ensure they meet local marriage law requirements.



ITINERARIES

RELAXED PACE



- MORE OVERNIGHTS IN PORTS OF CALL
- MOST VOYAGES RANGE 7-10 NIGHTS
- ABILITY TO COMBINE BACK-TO-BACK VOYAGES WITHOUT REPEATING PORTS
- INTIMATE SIZE ALLOWS ACCESS TO COVETED YACHTING DESTINATIONS

THE SHORE COLLECTION

EXPERIENCES ASHORE

Five themed categories

Iconic sights - Active Explorations

Epicurean Experiences - Stirring the Senses

Cultural Connections

Concierge ashore for custom arrangements or private excursions



Yoga on a private beach in Grenada

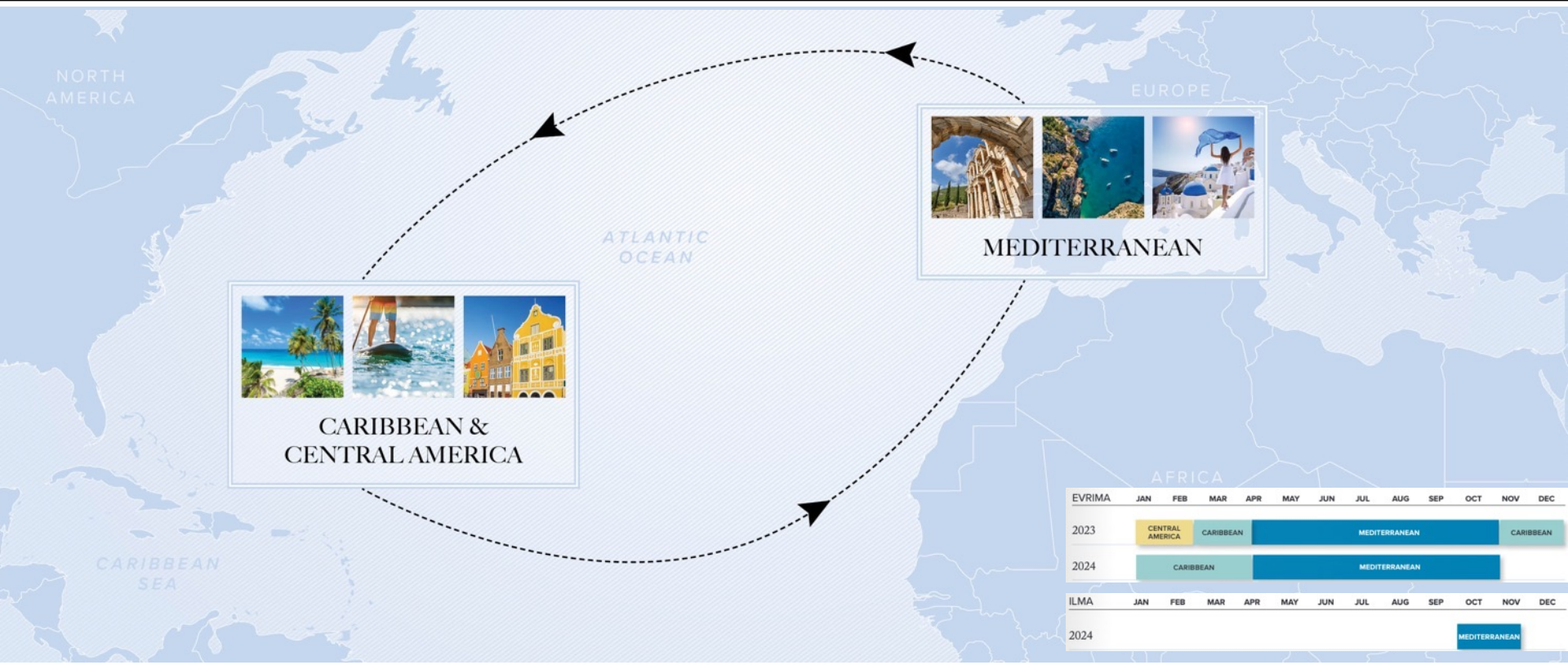
Tour the ruins of Ephesus

Zipline over the Costa Rican Rainforest

Hunt for truffles in Tuscany

DJ Workshop in Ibiza

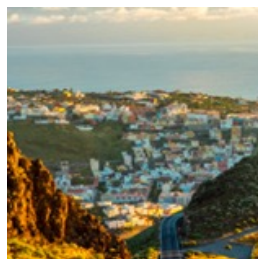
2023-2024 SEASONS



2023 VOYAGE CALENDAR

MEDITERRANEAN

DATE	NIGHTS	ITINERARY	YACHT
JUL 8	7	ROME TO NICE	EVIRIMA
JUL 15	7	NICE TO BARCELONA	EVIRIMA
JUL 22	11	BARCELONA TO ROME	EVIRIMA
AUG 2	10	ROME TO VENICE	EVIRIMA
AUG 12	7	VENICE TO ROME	EVIRIMA
AUG 24	9	VALLETTA TO ATHENS	EVIRIMA
SEP 2	7	ATHENS TO ATHENS	EVIRIMA
SEP 9	7	ATHENS TO ISTANBUL	EVIRIMA
SEP 16	11	ISTANBUL TO ATHENS	EVIRIMA
SEP 27	7	ATHENS TO ATHENS	EVIRIMA
OCT 4	11	ATHENS TO ROME	EVIRIMA
OCT 15	7	ROME TO BARCELONA	EVIRIMA
OCT 22	9	BARCELONA TO TENERIFE	EVIRIMA



CARIBBEAN

NOV 12	7	BARBADOS TO BARBADOS	EVIRIMA
NOV 19	7	BARBADOS TO BARBADOS	EVIRIMA
NOV 26	7	BARBADOS TO SAN JUAN	EVIRIMA
DEC 1	5	SAN JUAN TO SAN JUAN	EVIRIMA
DEC 6	7	SAN JUAN TO FORT LAUDERDALE	EVIRIMA
DEC 13	7	FORT LAUDERDALE TO FORT LAUDERDALE	EVIRIMA
DEC 20	7	FORT LAUDERDALE TO FORT LAUDERDALE	EVIRIMA
DEC 27	7	FORT LAUDERDALE TO SAN JUAN	EVIRIMA

2024 VOYAGE CALENDAR

CARIBBEAN

DATE	NIGHTS	ITINERARY	YACHT
JAN 3	7	SAN JUAN TO BARBADOS	EVRIMA
JAN 10	7	BARBADOS TO BARBADOS	EVRIMA
JAN 17	7	BARBADOS TO BARBADOS	EVRIMA
JAN 24	6	BARBADOS TO SAN JUAN	EVRIMA
JAN 30	5	SAN JUAN TO SAN JUAN	EVRIMA
FEB 9	8	SAN JUAN TO SAN JUAN	EVRIMA
FEB 17	7	SAN JUAN TO BARBADOS	EVRIMA
FEB 24	7	BARBADOS TO BARBADOS	EVRIMA
MAR 2	5	BARBADOS TO SAN JUAN	EVRIMA
MAR 11	5	SAN JUAN TO SAN JUAN	EVRIMA
MAR 16	7	SAN JUAN TO SAN JUAN	EVRIMA
MAR 28	7	SAN JUAN TO BERMUDA	EVRIMA

MEDITERRANEAN

DATE	NIGHTS	ITINERARY	YACHT
APR 15	11	LISBON TO BARCELONA	EVRIMA
APR 26	11	BARCELONA TO ROME	EVRIMA
MAY 7	10	ROME TO VALLETTA	EVRIMA
MAY 28	7	ROME TO ROME	EVRIMA
JUNE 9	10	VALLETTA TO ATHENS	EVRIMA
JUN 19	11	ATHENS TO VENICE	EVRIMA
JUN 30	7	VENICE TO VENICE	EVRIMA
JUL 7	7	VENICE TO ATHENS	EVRIMA
JUL 14	7	ATHENS TO ATHENS	EVRIMA
JUL 21	7	ATHENS TO VENICE	EVRIMA
JUL 28	10	VENICE TO ROME	EVRIMA
AUG 7	7	ROME TO NICE	EVRIMA
AUG 14	7	NICE TO ROME	EVRIMA
AUG 26	5	VALLETTA TO ROME	EVRIMA
AUG 31	7	ROME TO VALLETTA	EVRIMA
SEP 7	8	VALLETTA TO ATHENS	EVRIMA
SEP 19	7	ATHENS TO HAIFA	ILMA
SEP 20	11	ATHENS TO ATHENS	EVRIMA
SEP 26	12	HAIFA TO ROME	ILMA
OCT 1	9	ATHENS TO VALLETTA	EVRIMA
OCT 8	7	ROME TO ROME	ILMA
OCT 10	7	VALLETTA TO NICE	EVRIMA
OCT 15	7	ROME TO BARCELONA	ILMA
OCT 17	7	NICE TO BARCELONA	EVRIMA
OCT 22	10	BARCELONA TO LISBON	ILMA
OCT 24	10	BARCELONA TO TENERIFE	EVRIMA

TRANSOCEANIC

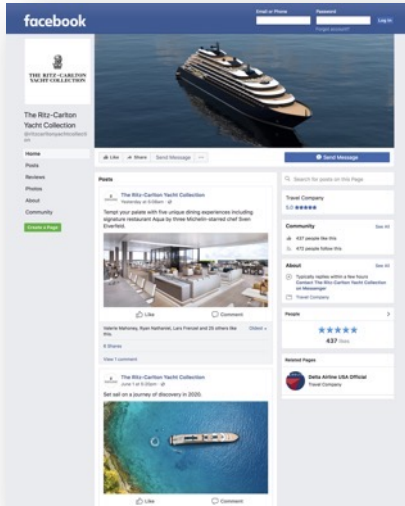
DATE	NIGHTS	ITINERARY	YACHT
APR 4	11	BERMUDA TO LISBON	EVRIMA
NOV 1	13	LISBON TO SAN JUAN	ILMA
NOV 3	11	TENERIFE TO BARBADOS	EVRIMA



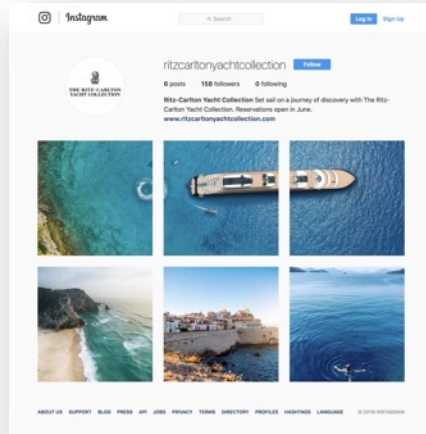
FOLLOW US ON SOCIAL



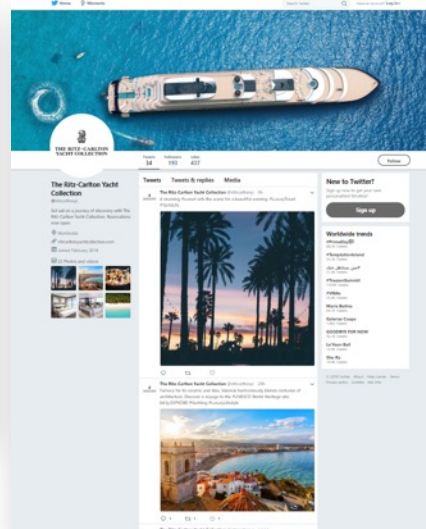
@ritzcarltonyachtcollection



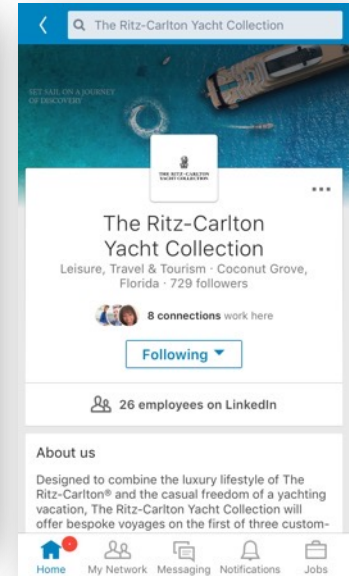
@ritzcarltonyachtcollection



@ritzcarltonyc



The Ritz-Carlton Yacht Collection



WHAT'S NEW

ILMA PRODUCT INFORMATION

INTRODUCING THE NEXT GENERATION

- Two new superyachts, *Ilma* and *Luminara*, slated to set sail in 2024 and 2025 respectively.
- Signature spaces:
 - Multiple dining experiences
 - Wine vault
 - The Ritz-Carlton Spa®
 - Expanded marina with access to the sea
- Higher percentage of upper suites
- Reservations for *Ilma* now open



ILMA BY THE NUMBERS



790
FEET
(241 METERS)

46,750
TONS

224
SUITES

448
GUESTS

374
CREW

1 to 1.2
CREW-TO-GUEST
RATIO

1 to 104.4
GUEST-TO-SPACE
RATIO

ILMA'S SUITES

- 224 SUITES, EACH WITH PRIVATE OCEAN-VIEW TERRACE
- TWO NEW UPPER SUITE CATEGORIES
- SUPERIOR GUEST AMENITIES



ILMA SUITES AT A GLANCE

THE OWNER'S SUITE



SUITE: 732-1033 SQ FT | 68-96 SQ M
TERRACE: 581-721 SQ FT | 54-67 SQ M
QUANTITY: 8

THE CONCIERGE SUITE



SUITE: 689-785 SQ FT | 64-73 SQ M
TERRACE: 355-409 SQ FT | 33-38 SQ M
QUANTITY: 4

THE ILMA SUITE



SUITE: 506-657 SQ FT | 47-61 SQ M
TERRACE: 291-301 SQ FT | 27-28 SQ M
QUANTITY: 4

THE VIEW SUITE



SUITE: 517-689 SQ FT | 48-64 SQ M
TERRACE: 108-205 SQ FT | 10-19 SQ M
QUANTITY: 2

THE GRAND SUITE



SUITE: 560 SQ FT | 52 SQ M
TERRACE: 90-199 SQ FT | 8.4-18.5 SQ M
QUANTITY: 32

THE SIGNATURE SUITE



SUITE: 409 SQ FT | 38 SQ M
TERRACE: 71-151 SQ FT | 6.6-14 SQ M
QUANTITY: 77

THE TERRACE SUITE



SUITE: 294-452 SQ FT | 27.3-42 SQ M
TERRACE: 52-161 SQ FT | 4.8-15 SQ M
QUANTITY: 92 (+5 ADA)

THE GRAND SUITE

SELLING OPPORTUNITIES: ILMA

ATHENS TO HAIFA

September 19, 2024 | 7 Nights



HAIFA TO ROME

September 26, 2024 | 12 Nights



ROME ROUNDTRIP

November 7, 2023 | 12 Nights



ROME TO BARCELONA

October 15, 2024 | 7 Nights



BARCELONA TO LISBON

October 22, 2024 | 10 Nights



LISBON TO SAN JUAN

November 3, 2024 | 11 Nights



NEXT GENERATION MILESTONES



March 22, 2023, the keel-laying ceremony was held for our second yacht, *Ilma*, at Chantiers de l'Atlantique in Saint-Nazaire, France.



June 6, 2023, the steel-cutting ceremony for our third yacht, *Luminara*, marked the official commencement of construction

CONTACT US

insidesales@ritz-carltonyachtcollection.com

TRAVEL PROFESSIONAL PORTAL:

www.ritzcarltonyachtcollection.com/travelprofessionals

- Manage bookings
- View availability
- Marketing resources
- And more!

US & Canada: (833) 753-9265

Outside the U.S & Canada: +1 (305) 907-7101

Europe, Asia & Africa: +356 2778 0081





THANK YOU